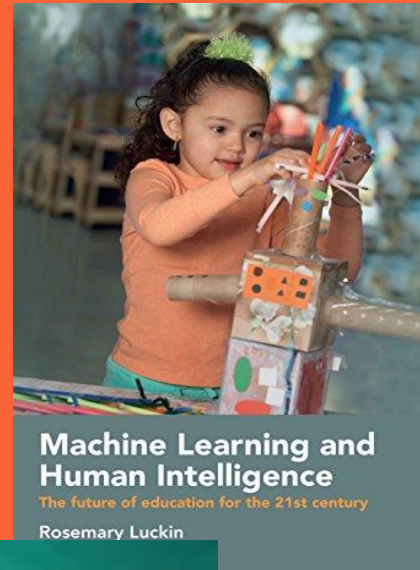
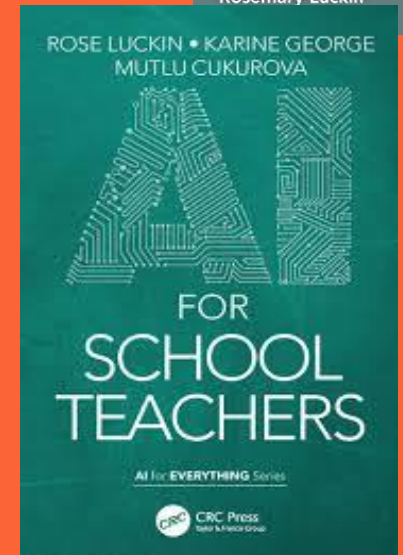




# AI for Human Thriving



For all your AI needs: we help you realise the opportunity of AI



## Prof Rose Luckin

 Emeritus Professor of Learner Centred Design • IOE - Culture, Communication & Media

Rosemary (Rose) Luckin is Professor of Learner Centred Design at UCL Knowledge Lab. Rose's research involves the design and evaluation of educational technology using theories from the learning sciences and techniques from Artificial Intelligence. She has a particular interest in how A...





- What is AI and where are we now with AI?
- Why does AI matter to Education?
- What do students need to know to thrive?

**What is AI and where are we now  
with AI?**

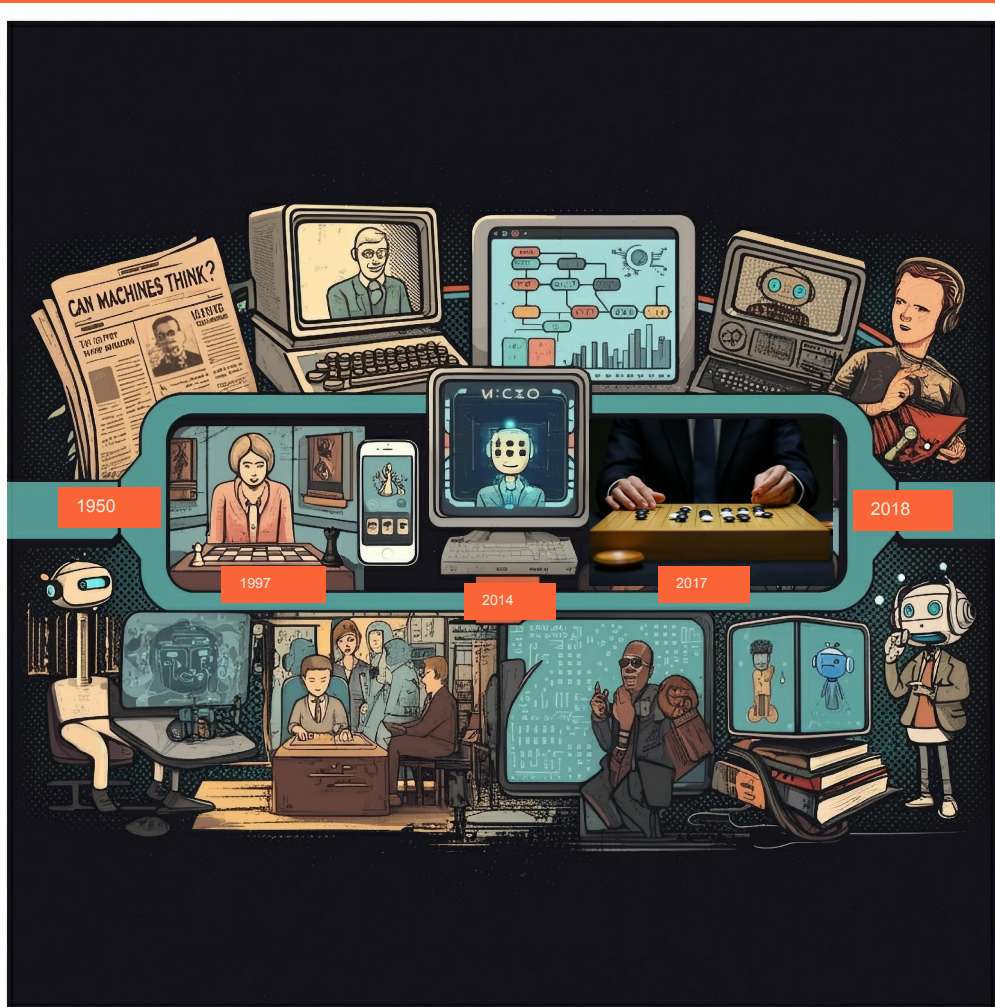


## What is AI?

**Technology that analyses its environment and acts with some autonomy to achieve goals**

AI is not new

Its history is important





Generative AI is only  
part of the story



AI is not going away

It will transform society, education,  
the world

What we don't know is exactly  
how!

**Why does AI matter to Education?**



# The Opportunities

Adaptive or personalised learning paths

Automated marking and feedback

Augmented and Virtual Reality

AI powered dashboards for learner analytics

Content generation

Teacher and learner assistants

# The Threats

Lack of transparency & Inaccuracy

Personal data & data risk

Inherent bias

Agenda and purpose

Ethics & safeguarding

Un-intended Consequences

What do students need to know to thrive?

# The 3 Lenses of AI in Education



1

AI tools:

Using AI in Education to tackle some of the big educational challenges

2

Increasing Human Intelligence:

Changing Education so that we focus on human intelligence and prepare people for an AI world

3

Learning about AI:

Educating People about AI so that they can use it safely and effectively

**Artificial  
intelligence  
in  
Education**

1

## AI tools:

Using AI in Education to tackle some of the big educational challenges

2

## Increasing our Human Intelligence:

Changing Education so that we focus on human intelligence and prepare people for an AI world

3

## Learning about AI:

Educating People about AI so that they can use it safely and effectively

# Artificial intelligence in Education

EDUCATE  
VENTURES RESEARCH

# Learning is Complex

Our ability to learn must continue  
to evolve to be ever more  
sophisticated

[https://www.educateventures.com/\\_files/ugd/c43582\\_3950bb11755d4306ba9dc33811bbfc25.pdf](https://www.educateventures.com/_files/ugd/c43582_3950bb11755d4306ba9dc33811bbfc25.pdf)



## Machine Learning and Human Intelligence

The future of education for the 21st century

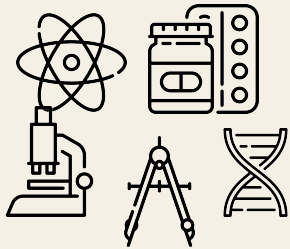
Rosemary Luckin



3. Social intelligence

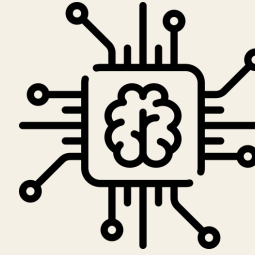
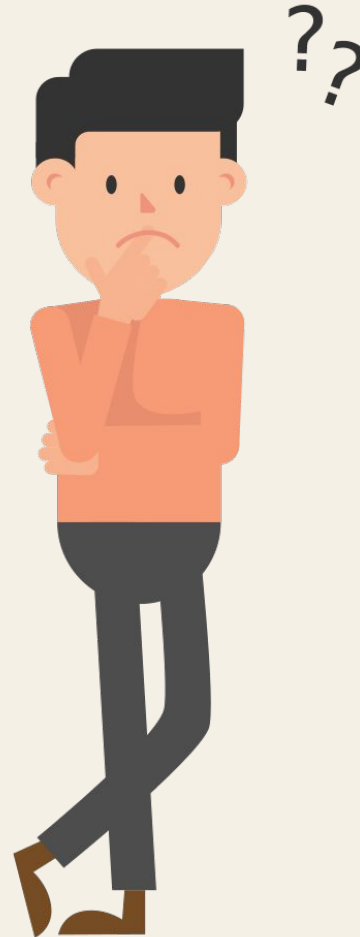


2. Meta-knowing intelligence



1. Interdisciplinary Academic intelligence

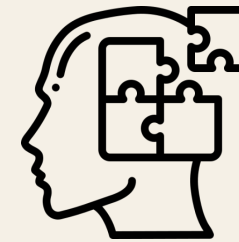
4. Meta-cognitive intelligence



5. Meta-subjective intelligence



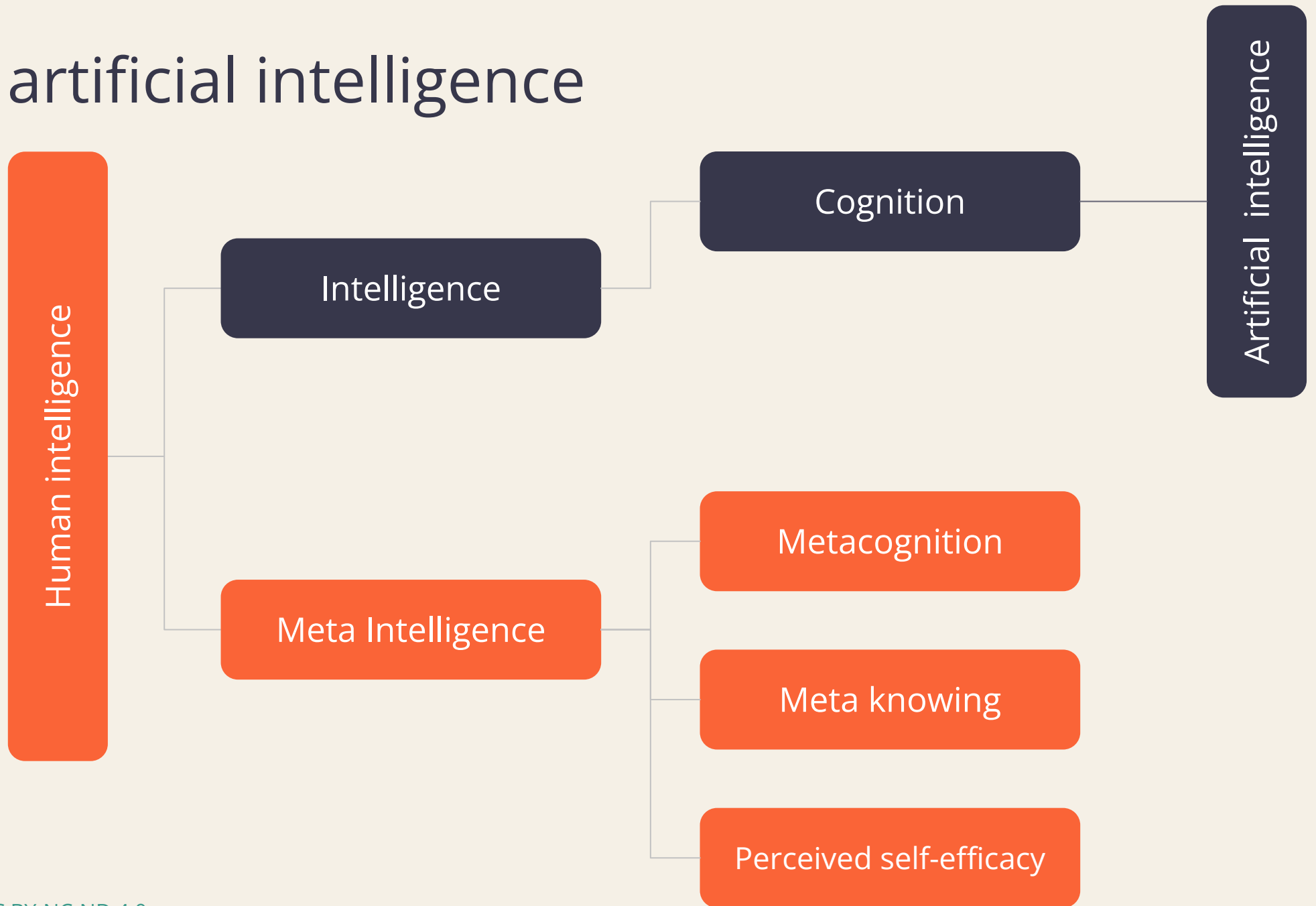
6. Meta-contextual intelligence



7. Perceived self-efficacy



# Human vs artificial intelligence

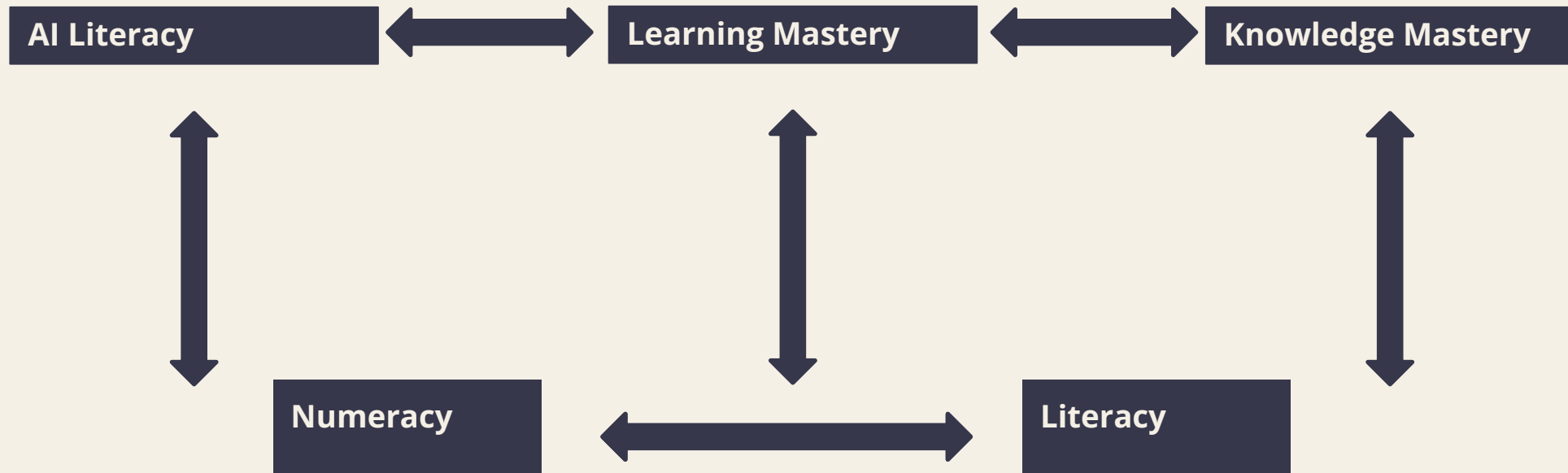


## Caution

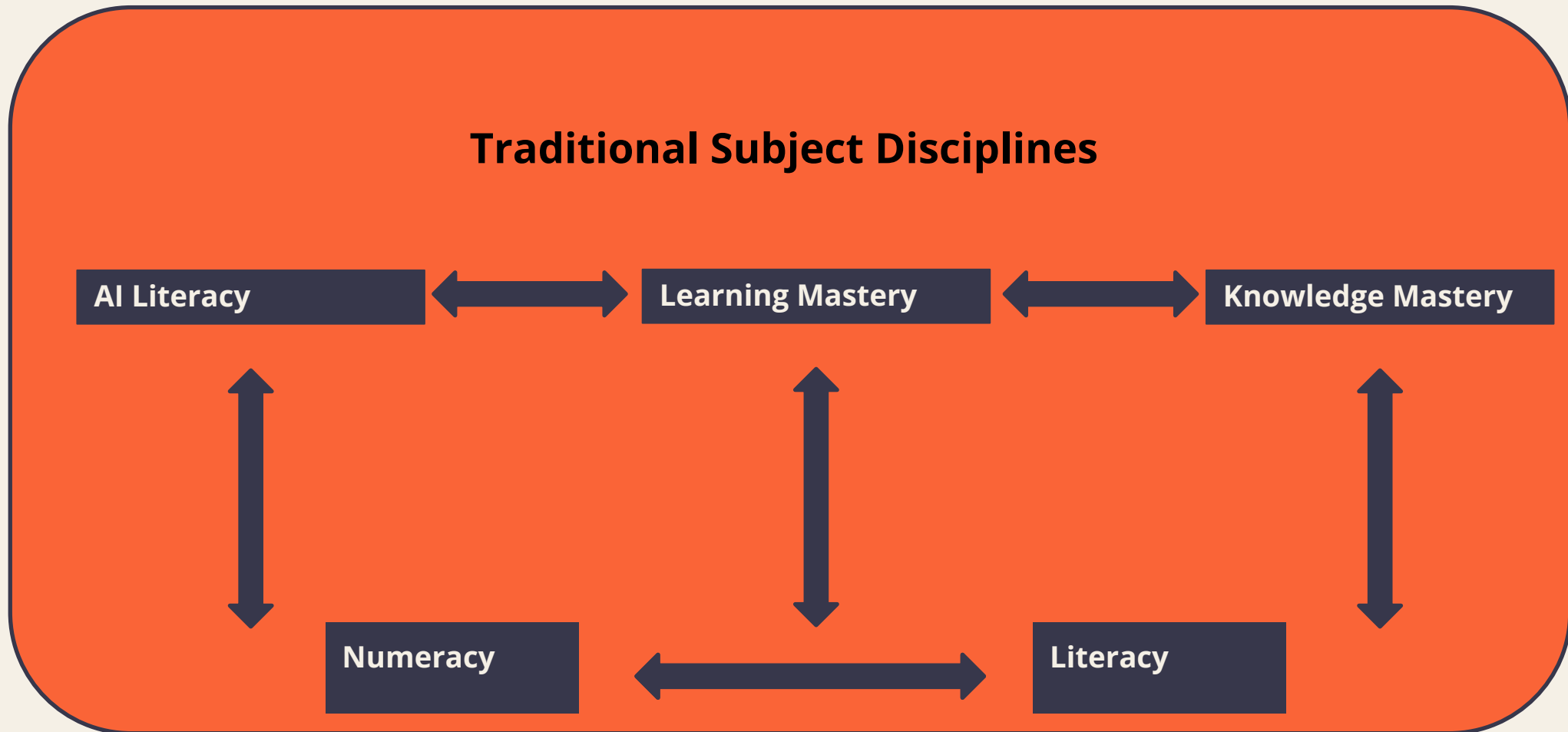
“Unlike most non-human biological cognition, human cognition is changing: the average IQ in many countries is increasing (the Flynn effect), **our memory** (Sparrow et al. 2011) **is changing** due to the Google effect (digital amnesia), **navigation abilities** (McKinlay 2016; Milner 2016) **atrophied** because satnavs, cognitive rewards mechanisms are changing because of gamification, etc. This is a process that is **accelerated by technology**, and will be **magnified by the use of cognitive assistants and cognitive prosthetics**, especially for the elderly. AI itself and human-machine hybrids (either as individual cyborgs or as mixed collectives) are progressing in directions that we are not able to compare with the past or extrapolate, in order to understand where all this is leading, and the associated opportunities and risks (research priorities and safety concerns).”

Bhatnaga et al., 2018

# What do students need to learn?



# What do students need to learn?



AI can help



AI can provide enhanced analytics  
that can show the learning process  
as it happens



- What is AI and where are we now with AI?
- Why does AI matter to Education?
- What do students need to know to thrive?

# Host of the EdTech Podcast

Professor  
Rose Luckin



THE EDTECH PODCAST

# EVR Products & Services

[AI CPD for Schools](#)

[AI Strategy Development for Schools](#)

[Bespoke AI & Data Science Consultancy](#)

[hello@educateventures.com](mailto:hello@educateventures.com)

[educateventures.com](https://educateventures.com)

**EDUCATE**  
VENTURES RESEARCH



Find out more about AI and EVR

A screenshot of a mobile application interface. The top status bar shows the time 06:34, signal strength, Wi-Fi, and battery icons. Below the status bar is a dark blue header with a purple shopping bag icon, the logo 'EDUCATE VENTURES RESEARCH' (with 'EDUCATE' in white and 'VENTURES RESEARCH' in smaller white text below it), and a purple hamburger menu icon. The main content area is white and features a bold, black heading: 'Welcome to Professor Rose Luckin's Educate Ventures Research'. Below the heading is a paragraph of text: 'Would you like to **stay informed** on AI for Education news and insights, or would you like to **have a conversation** with us?'. At the bottom of the content area are two rounded buttons: a dark blue button with the text 'Stay informed' in white, and an orange button with the text 'Have a conversation' in white.

Many Thanks

